

PART OF SEC. 31-32, T.7N., R.3E., S.L.B. & M.
EVERGREEN PARK SUBDIVISION NO. 1

LOTS 165 - 172, 200 - 213, 250 - 256, 310 - 314

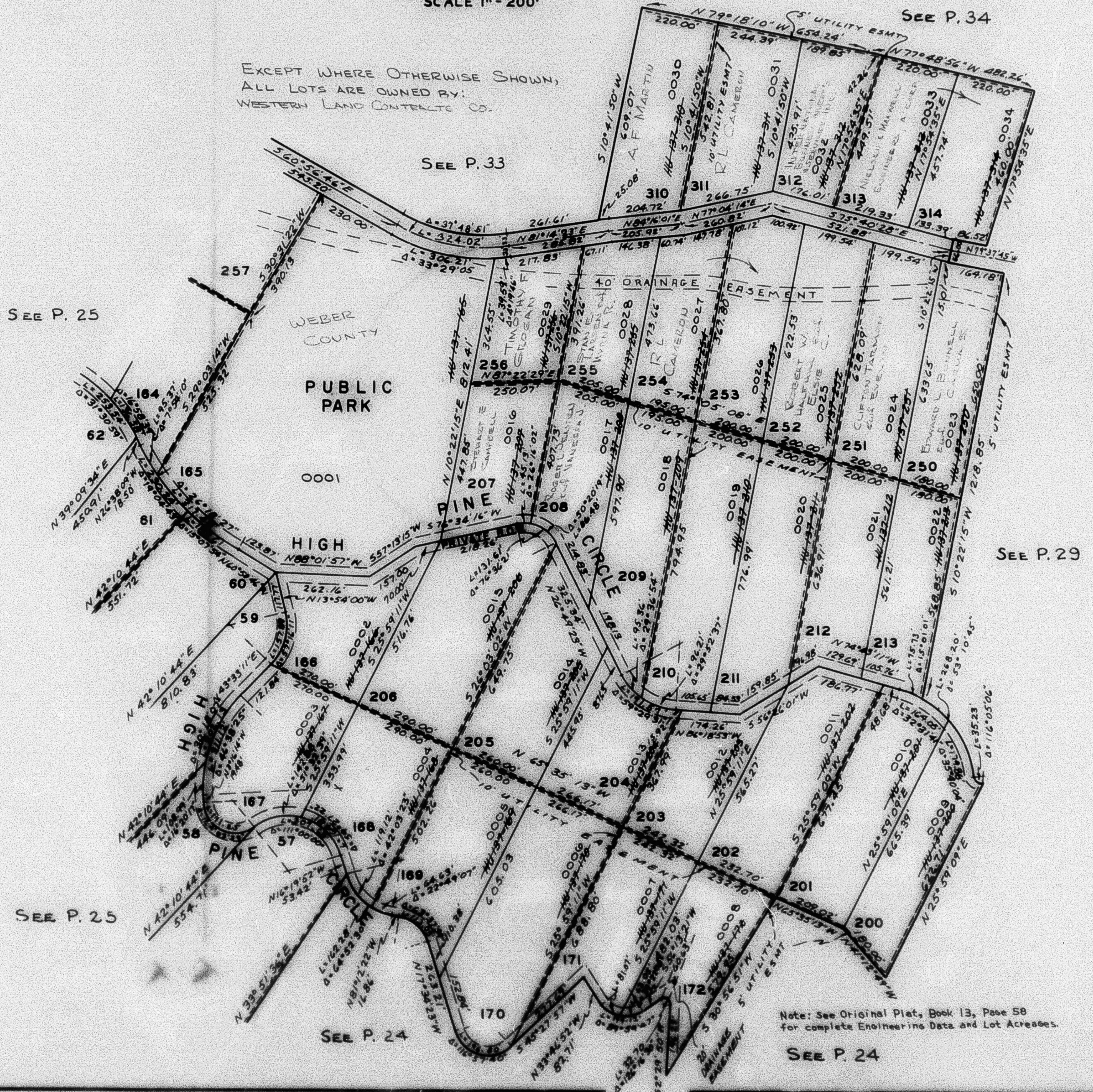
TAXING UNIT: 58

WEBER COUNTY

PREFIX: 23-028

SCALE 1" = 200'

EXCEPT WHERE OTHERWISE SHOWN,
ALL LOTS ARE OWNED BY:
WESTERN LAND CONTRACTS CO.



Note: See Original Plat, Book 13, Page 58
for complete Engineering Data and Lot Acres.